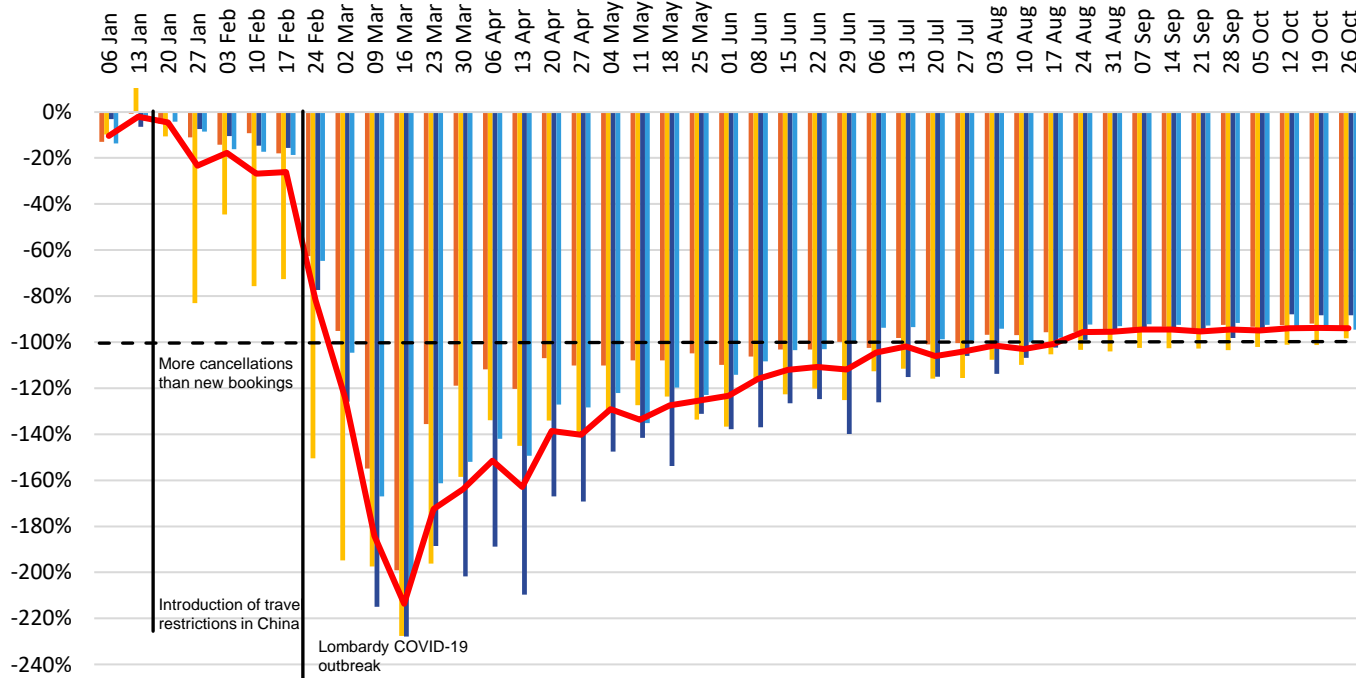


Future bookings to the European Union show that the reactivation of international travel has stalled since the end of the summer season.



Bookings made for International travel to European Union destinations by departure region

06 January to 01 November, Year on Year variations



Bookings made Year to date* YoY % change

Asia Pacific	-112.4%
Europe	-92.5%
Americas	-109.4%
Africa & Middle East	-90.1%
Total Global	-99.8%

*Bookings made from 06 January to 01 November



Booking made from 06 January to 01 November 2020 vs same period in 2019 for future travel at any time.



Only considered pax staying 1 to 21 nights at destinations.



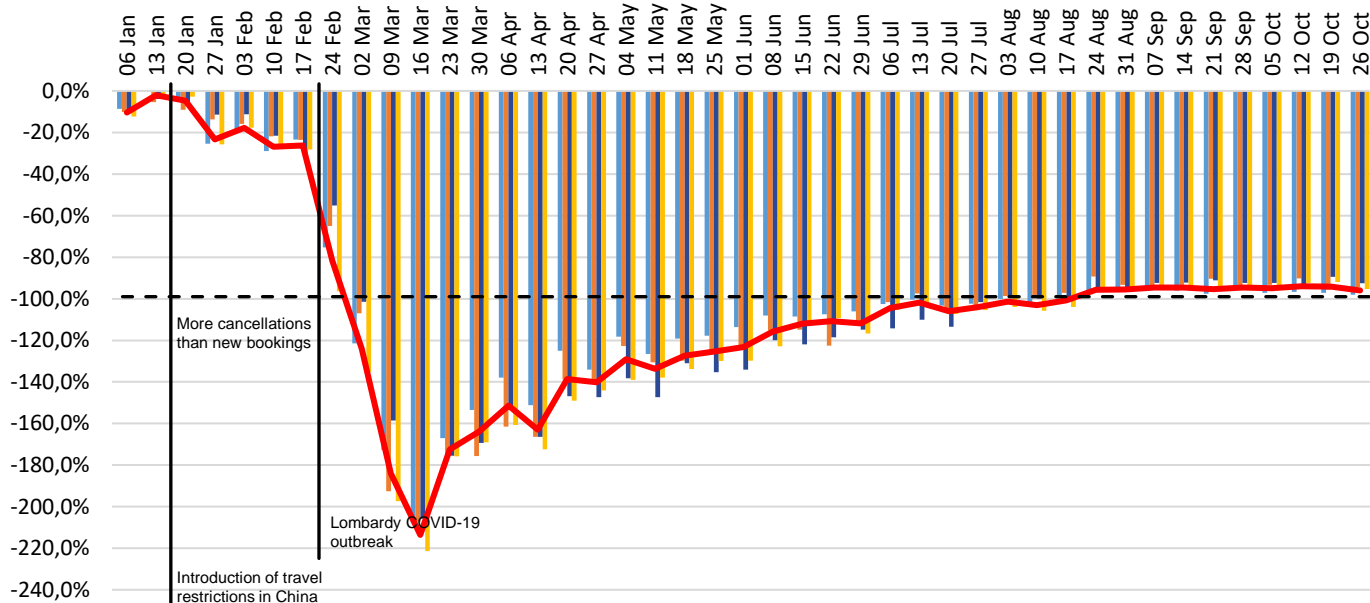
Source: ForwardKeys air reservation data.

All regions in the European Union are affected on a similar scale



Bookings made for International travel to European Union destinations by arrival region

06 January to 01 November, Year on Year variations



Bookings made

Year to date *

YoY % change

Southern Europe	-103.0%
Western Europe	-96.6%
Northern Europe	-99.8%
Central & Eastern Europe	-99.0%
Total Europe	-99.8%

*Bookings made from 6 January to 04 October



Booking made from 06 January to 01 November 2020 vs same period in 2019 for future travel at any time.



Only considered pax staying 1 to 21 nights at destinations.



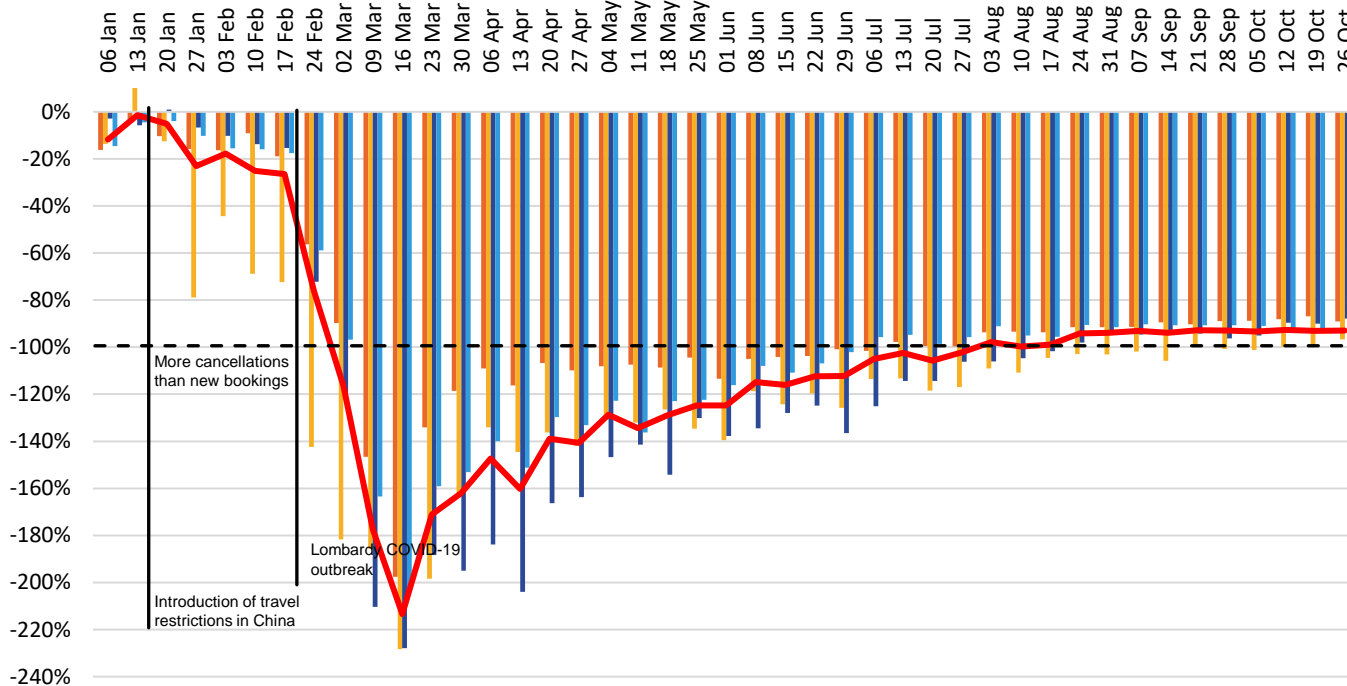
Source: ForwardKeys air reservation data.

Future bookings to Europe show that the reactivation of international travel has stalled since the end of the summer season.



Bookings made for International travel to Europe by departure region

06 January to 01 November, Year on Year variations



Bookings made Year to date* YoY % change

Asia Pacific	-110.5%
Europe	-92.0%
Americas	-107.5%
Africa & Middle East	-89.1%
Total Global	-98.8%

*Bookings made from 6 January to 01 November

Booking made from 06 January to 01 November 2020 vs same period in 2019 for future travel at any time.

Only considered pax staying 1 to 21 nights at destinations.

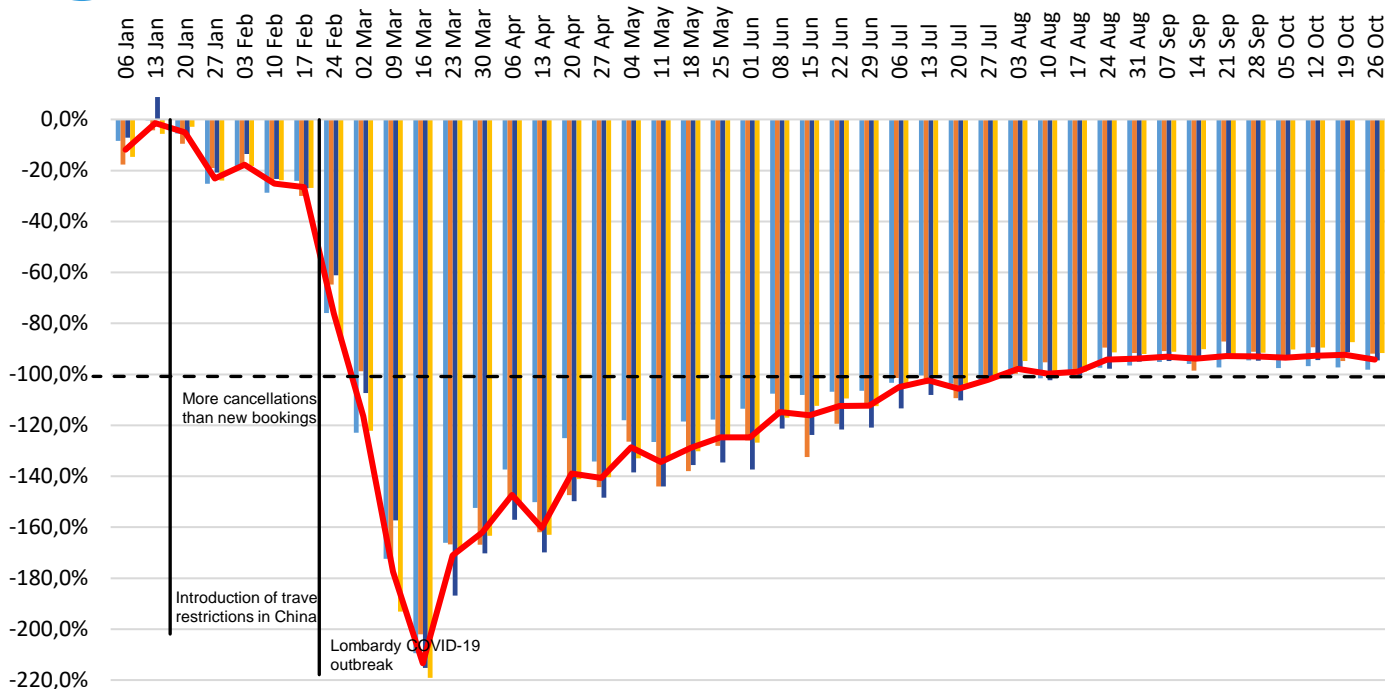
Source: ForwardKeys air reservation data.

All regions in Europe are affected on a similar scale



Bookings made for International travel to European destinations by arrival region

06 January to 01 November, Year on Year variations



Bookings made Year to date *

YoY % change

Southern Europe	-98.5%
Western Europe	-96.0%
Northern Europe	-100.6%
Central & Eastern Europe	-97.7%
Total Europe	-98.8%

*Bookings made from 6 January to 01 November



Booking made from 06 January to 01 November 2020 vs same period in 2019 for future travel at any time.

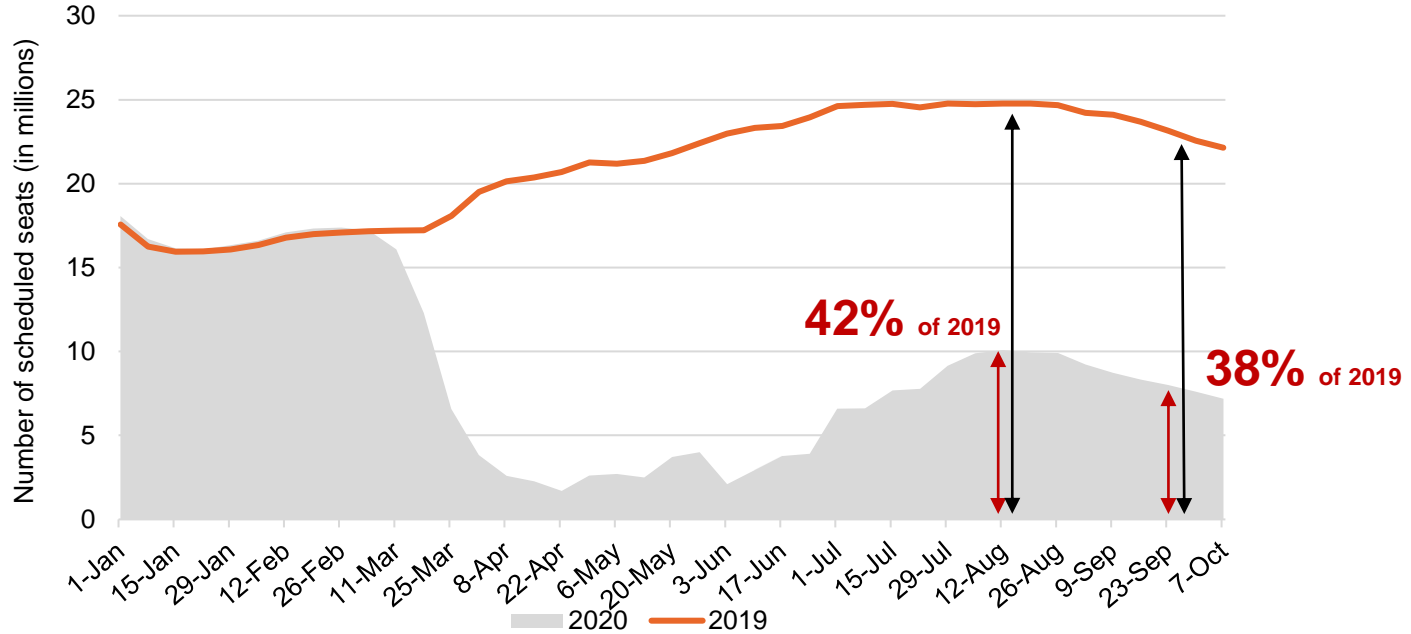


Only considered pax staying 1 to 21 nights at destinations.



Source: ForwardKeys air reservation data.

Seat Capacity for international travel to Europe
Year-to-Date 2020 vs 2019



****The air capacity seats are reported as per the data parameters listed above. They may differ due to the quick changing developments within the aviation sector, including unreported or unfiled seat numbers by airline operators.****



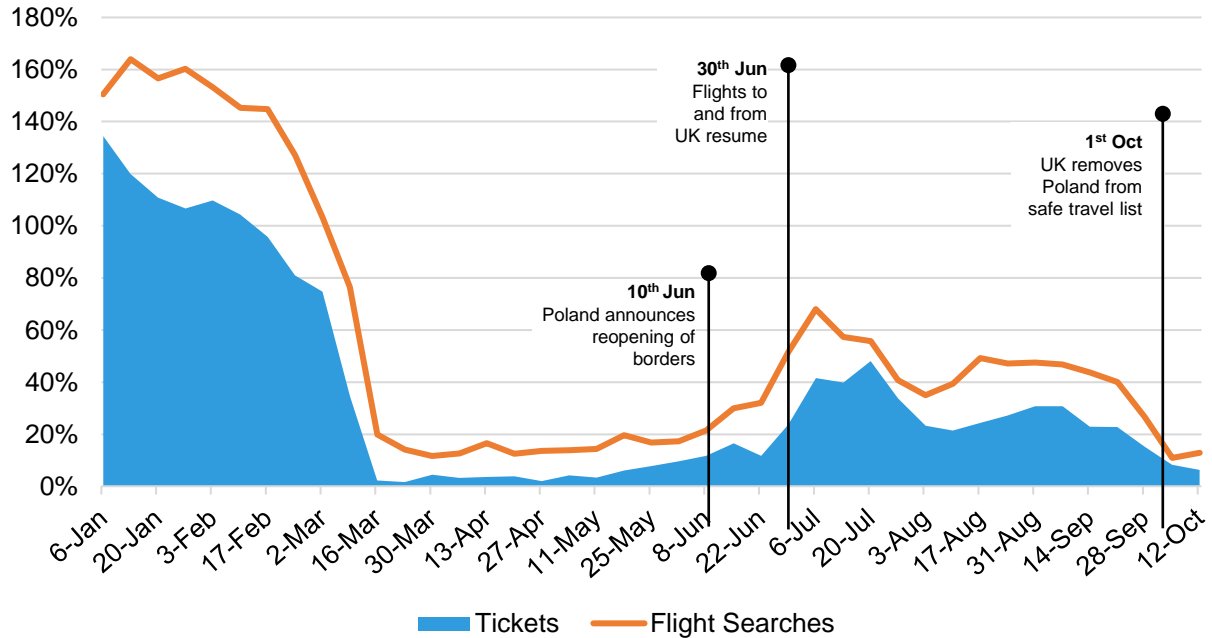
Air Capacity for flight dates between 1 Jan to 13 October 2020 vs same period in 2019, for international travel to Europe, as of 19 October 2020.



Source: ForwardKeys Seat Capacity

Travel restrictions continue shaping travel

New tickets issued vs Flight Searches for travel from the United Kingdom to Poland
2020 vs 2019 ticket volumes



Searches and tickets issued from 6 Jan to 18 Oct 2020 vs same period last year, for international travel from UK to Poland.



Only considered pax staying 1 to 21 nights at destinations.

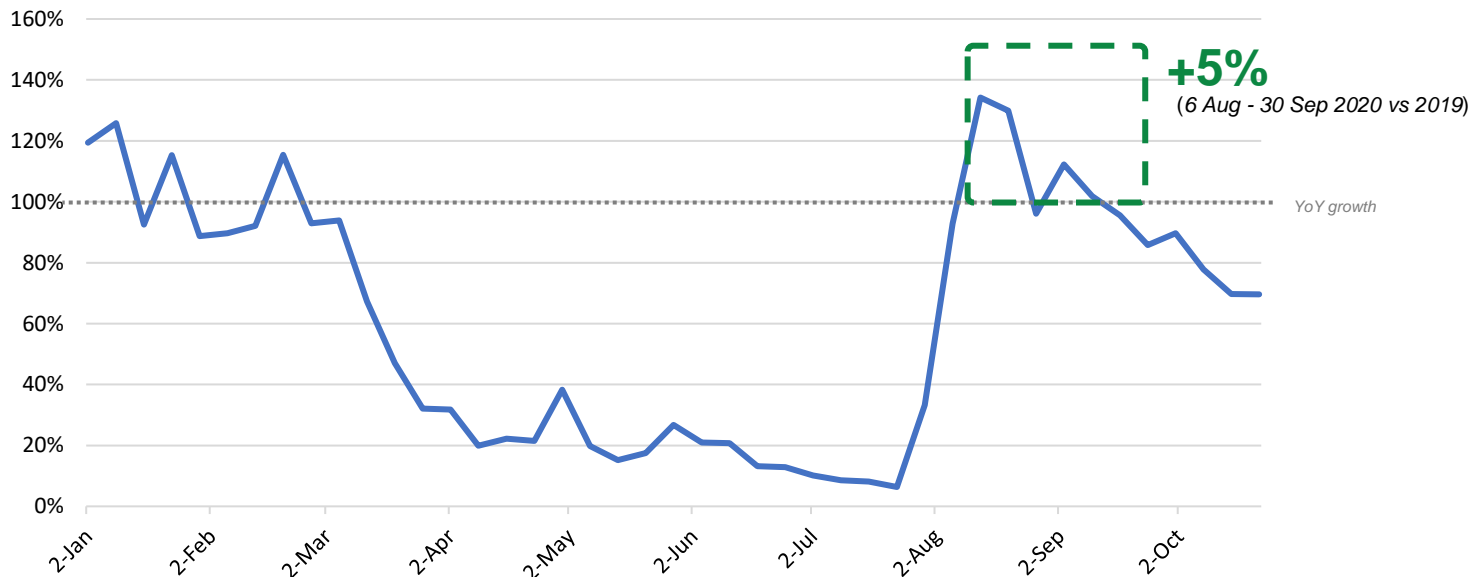


Source: ForwardKeys Air Ticket Data, ForwardKeys Flight Search data

Some travel corridors have showed positive results

Arrivals in Turkey from Russia

2020 vs 2019 ticket volumes



Arrivals from 2 Jan to 25 Oct 2020 vs same period last year, for any future travel to Turkey from Russia



Only considered pax staying 1 to 21 nights at destinations.



Source: ForwardKeys Air Ticket Data

The inequalities of travel restrictions across the globe

